

STANDARD LAYOUT

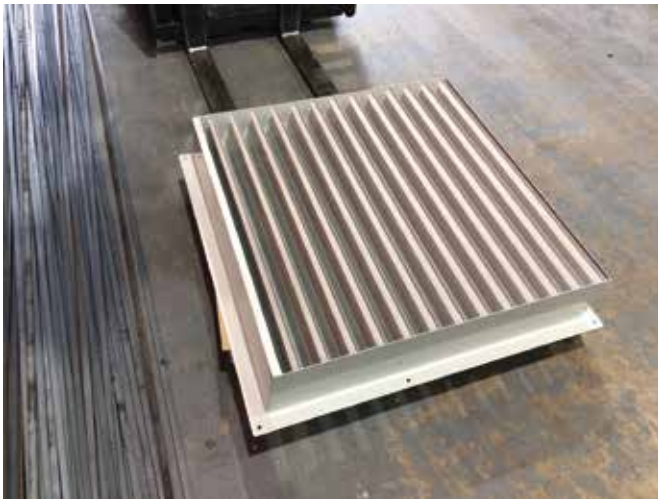
MATERIALS	Pre-galvanised M.S Construction
CASING	2mm - Coated in Silver enamel
BLADES	At 45 deg at 75 Ctrs c/w 12mm turn ends up and and down
FLANGES	50mm
MESH	½"SQ BirdGuard fitted to rear
FINISH	All weld damaged dressed and coated in C3 class top coat

OPTIONS FOR MATERIALS

MATERIALS	Aluminium, Marine Grade Aluminium, 304 and 316 Stainless Steel, Zintec
CASING	3mm to 5mm
BLADES	3mm
MESH	
FINISH	Powder Coated Finish - Standard Ral to C5-M Class

ADDITIONAL DAMPER INFORMATION

Engineered Air Treatment Ltd. Pride themselves on solving Damper issues and due to the many options available we would recommend contacting our sales team who would also assist where possible.



We have experience of supplying dampers from **-30°C to +80°C**



Approx **30Kg's per m²**. We can supply lifting eyes if required.



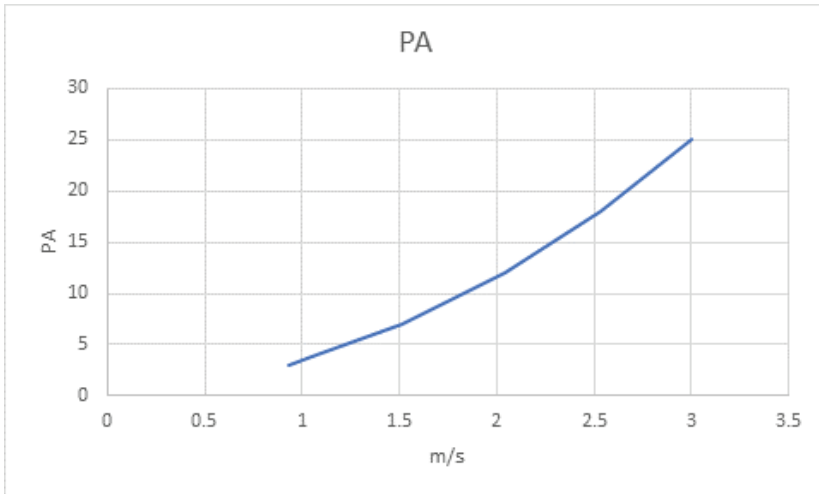
Please see graph above



Minimum **150mm**, maximum **2000mm** Module size, For bigger sizes speak to sales staff.

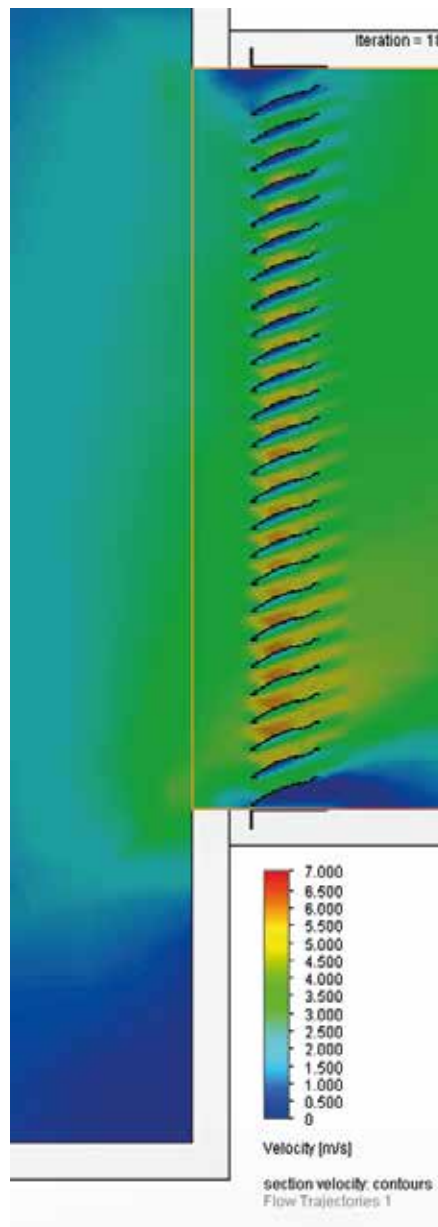
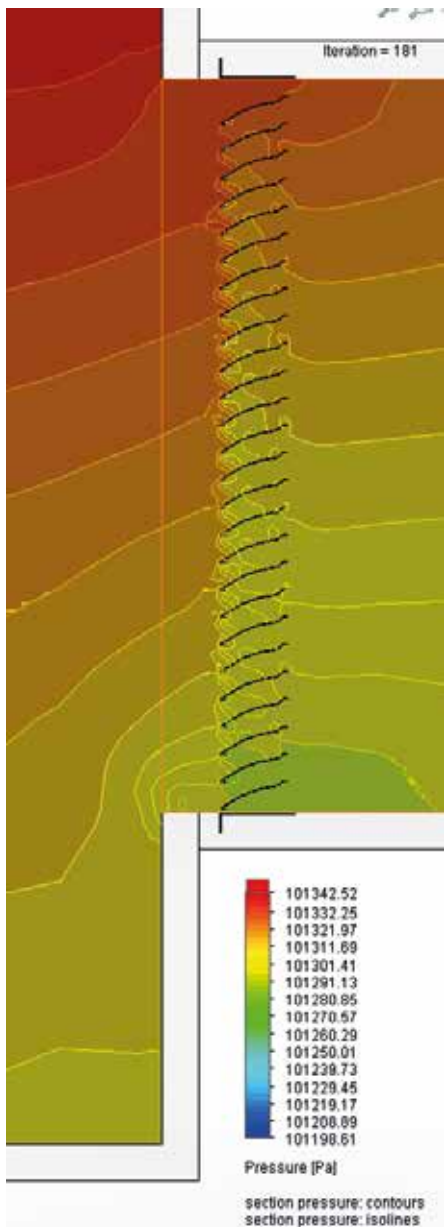
PRESSURE DROP

Ad-Hoc Results



M+	M/S	PA
3347	0.929	3
3865	1.07	4
5466	1.51	7
7216	2.04	12
9116	2.53	18
10800	3	25

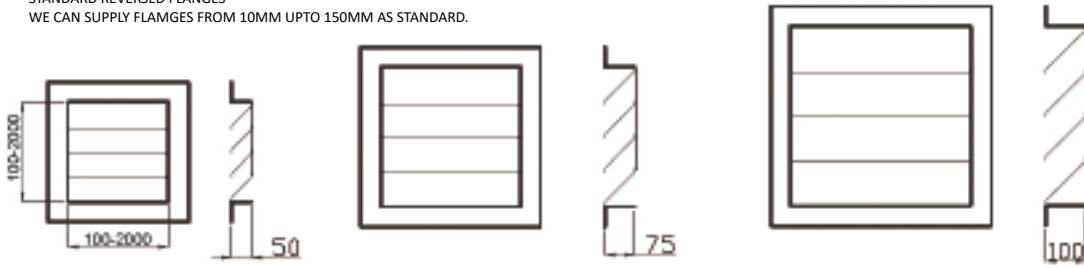
• Unofficial K Factor 5.6



STANDARD ARRANGEMENT

STANDARD FLANGES

STANDARD REVERSED FLANGES
WE CAN SUPPLY FLANGES FROM 10MM UPTO 150MM AS STANDARD.



WEATHER LOUVRE 50.

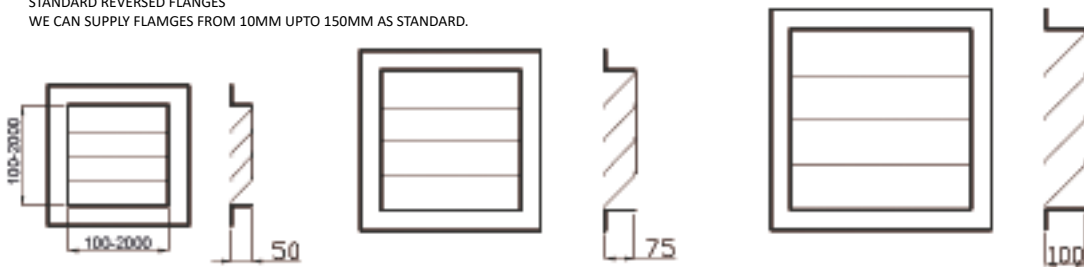
WEATHER LOUVRE 75.

WEATHER LOUVRE 100.

ENGINEERED AIR TREATMENT ARE VERY FLEXIBLE WITH DESIGNS.
WE CAN DESIGN BESPOKE TO CUSTOMERS NEEDS OR STANDARD.

REVERSE FLANGES

STANDARD REVERSED FLANGES
WE CAN SUPPLY FLANGES FROM 10MM UPTO 150MM AS STANDARD.



WEATHER LOUVRE 50.

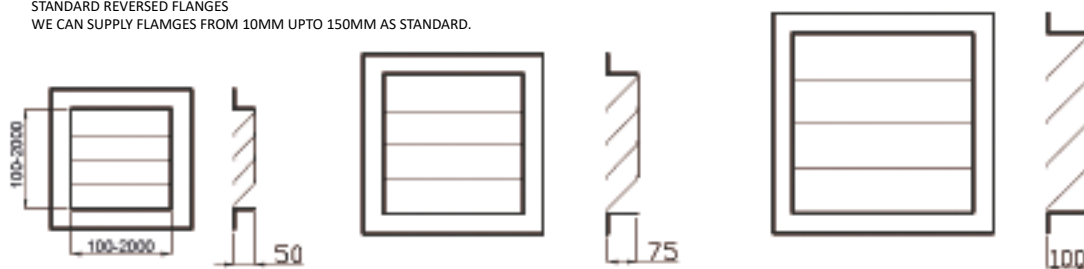
WEATHER LOUVRE 75.

WEATHER LOUVRE 100.

ENGINEERED AIR TREATMENT ARE VERY FLEXIBLE WITH DESIGNS.
WE CAN DESIGN BESPOKE TO CUSTOMERS NEEDS OR STANDARD.

RECESSED

STANDARD REVERSED FLANGES
WE CAN SUPPLY FLANGES FROM 10MM UPTO 150MM AS STANDARD.



WEATHER LOUVRE 50.

WEATHER LOUVRE 75.

WEATHER LOUVRE 100.

ENGINEERED AIR TREATMENT ARE VERY FLEXIBLE WITH DESIGNS.
WE CAN DESIGN BESPOKE TO CUSTOMERS NEEDS OR STANDARD.

SPECIALS- DUE TO THE ITEM BEING FABRICATED FROM SHEET FORM, FLANGES, DEPTH AND BLADE POSITION CAN BE DESIGNED TO MEET YOUR EXACT NEEDS.

FINISHING

Fixings

None (Standard)

Most weather louvres are supplied with no fixings.

In this instance we recommend drilling through either the louvre flange or the neck, and screwing directly into the supporting structure with an appropriate fixing.



Powdercoat Finish in Grey

Marine Grade Aluminum

Pre-punched face fixing holes - Ordering code FH

5.7mm countersunk fixing holes will be punched into the louvre frame before powder coating, allowing quick and easy fitting on site.

Number and layout of fixing holes will be appropriate to louvre size. Arrangements can be specified.

Supplied with pozidrive self tapping screws in the same finish as the louvre.

Only available with flanged and reversed flange louvres.



Louvre C/W Louvre Door for Access

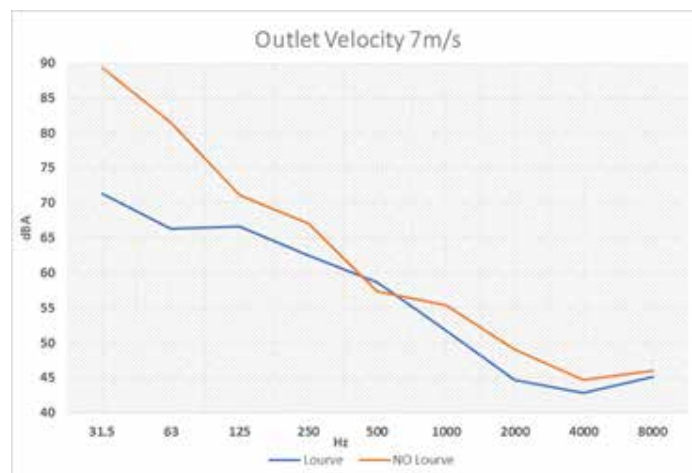
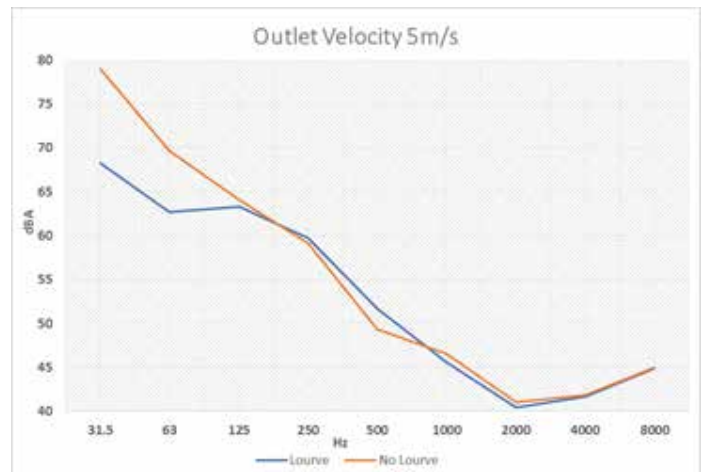
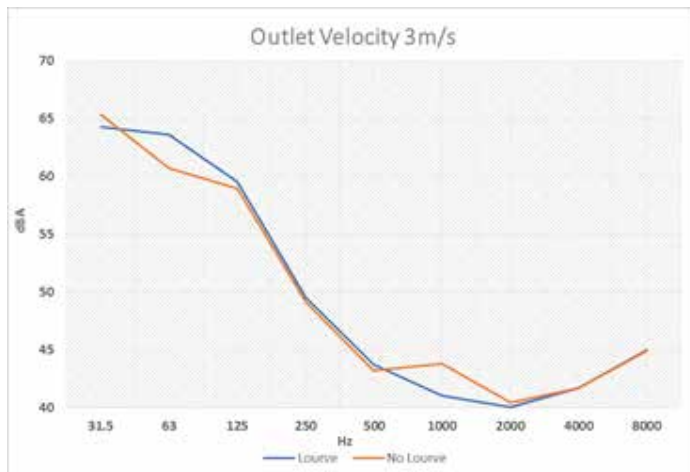


ACOUSTIC INFORMATION

MODEL AND SERIAL NUMBERS OF EQUIPMENT USED

Item	Model	Serial Number
Sound level Meter	Larson Davis MODEL 831	0003378
Microphone Calibrator	Larson Davis CAL200	5306
Anemometer	AIRFLOW LCA6000	1008458
Wind Shield		
ELTA FANS	See appendix under Fan details	

Completed by inhouse test rig.



SOUND PRESSURE LEVEL IN DBA AT POSITION 2 (WITH AND WITHOUT LOUVRE) AT DIFFERENT OUTLET VELOCITIES 3, 5 & 7 M/S



Engineered Air Treatment are proud of our quality record which allows us to have complete confidence in the products we offer. We adhere to our ISO9001 accreditation and install these values into our valuable employees. This confidence allows us to offer a 2 year warranty with all our products.

We also have complete traceability and files over 20 years old to look back on. We are a can do company.

CE Marking

The CE marking shall be the only marking which attests the conformity of the product with the applicable requirements of the relevant Community harmonisation legislation providing for its affixing"

There is also currently no relevant Community Harmonisation Legislation for a standard damper to adhere to and so CE marking to an official European standard is not possible.

CE Marking is required if dampers are Classed as fire rated safety products or according the building regulation 2016 a supporting the structure of the building, that is unless it comes into the Bespoke construction Section of the legislation and then due care and diligence needs to be illustrated.

This is our own interpretation of the current legislation and would react accordingly if required by law.

Engineered Air Treatment Ltd are a ISO9001: 2015 certified company, and can offer full material certification and traceability. We can also issue Certificate of Conformity, stating that we have supplied as ordered. We also supply EC Declaration of Incorporation with our products.